



How kids SHOULD interact with dogs

Use common sense.

Be polite and kind to pets.

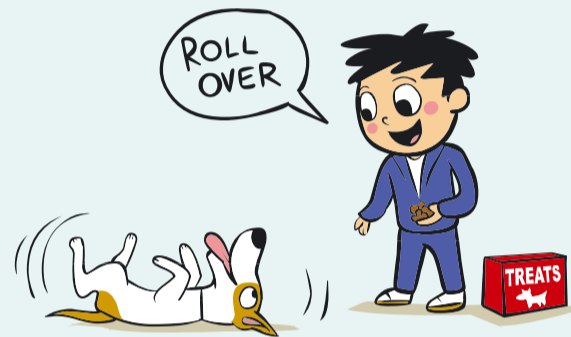


Learn to recognise when your dog is scared or anxious.



Play appropriate games with pets, such as:

Fetch.



Training tricks (like roll over, shake, beg, etc.)

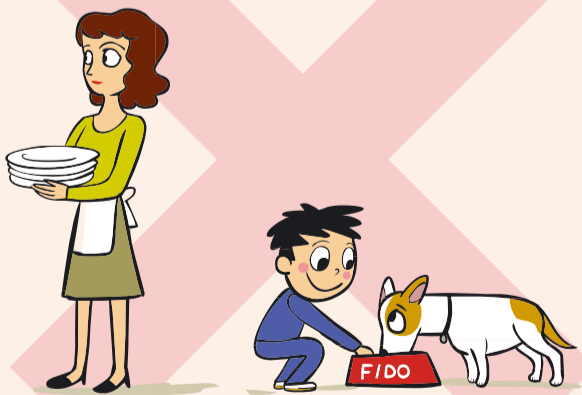
Walking and running with a dog.



Playing hide-and-seek.

Always remember:

Supervise all interactions. Accidents can happen in a split second.



Train your dog to associate the kids with positive experiences so he'll be more likely to tolerate your child in case she accidentally interacts inappropriately.



in partnership with Dr Sophia Yin, DVM MS
www.rspca.org.uk www.drsophiayin.com

Royal Society for the Prevention of Cruelty to Animals
Wilberforce Way, Southwater, Horsham, West Sussex RH13 9RS
www.rspca.org.uk [facebook.com/RSPCA](https://www.facebook.com/RSPCA) twitter.com/RSPCA_official

The RSPCA helps animals in England and Wales. Registered charity no. 219099. The RSPCA only exists with the support of public donations.