

My family History

History

Year 1 / 2

Previous Knowledge

What should I already know?

ELG—Understanding the World

- that people and families usually live in houses in towns and cities.
- the names and purposes of common appliances in the home.
- types of clothing, and that they are worn for different purposes and in varying styles.
- the names of common foodstuffs, and that some foodstuffs may not be safe to eat if they 'go bad'.
- that some types of shops sell food.
- that people can sometimes become ill, and that they will need to be helped to get better, possibly in a hospital.
- the names of some common toys common types of public transport –bus, train, aeroplane.
- that a ticket can be bought to use types of transport.

History skills and knowledge

What will I know or be able to do by the end of this unit?

Order events chronologically on timelines and use common words relating to the passage of time e.g first, next.

Make comparisons between now and then, recognising similarities and differences.

Know Who the Royal Family are.

Describe aspects of everyday life in the 1960s, including in relation to travel, health care, food and clothes.

Use 'childhood' artefacts to make comparisons.

Text Link

Dogger by Shirley Hughes

Overview Subject - History

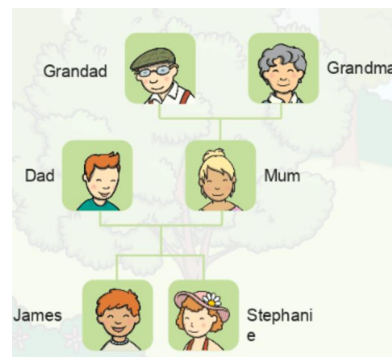
As historians, children will develop an awareness of the past through exploring changes within living memory. They will explore their grandparent's lives/people's lives in the 1960s and consider how these were different to people's lives now, and how the 1960s have influenced modern life in different ways. In particular, children will look at how people lived and their lifestyles. This includes understanding the emergence of fashion and trends, both in clothing and in toys. They will also encounter the development of transport, and that healthcare in Britain is provided through the NHS. The Royal Family will also be referenced in the initial lesson to support children's understanding of family relationships. The children will develop a wide vocabulary of everyday historical terms and will ask and answer questions, using a variety of sources.

Enquiry question

What toys did our parents and grandparents play with?

Family trees

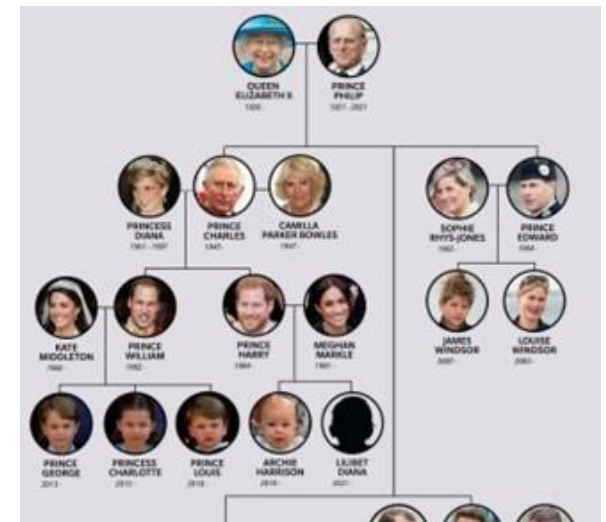
A family tree is a type of chart or diagram representing generations of families and how they are linked throughout the years.



Significant person/people

The British Royal Family

Queen Elizabeth II is the longest-reigning monarch of the United Kingdom. Next in line on the royal family tree is Prince Charles, her son with her late husband, Prince Philip, followed by Queen Elizabeth's grandchildren.



Transport in the 1960s



Key Vocabulary

Differences	Things that are not the same.
Fashion trend	A popular or the latest style of clothing or hair
Healthcare	Giving medical care to people
Larder	A room or cupboard to store food.
Past	The time before the present.
Popular	Liked and owned by many people.
Public transport	Transport that is available to the public, charge fix rates and run on fixed routes.
Resident	A person who lives in a particular area.
Similarities	Things that are the same.

Clothes in the 1960s

During the 1960's clothing began to be colourful with patterns. People chose clothing for different reasons. This is an example of fashion or a trend. More clothes were made from materials and fabrics which could be more easily washed at home.



Homes in the 1960s

People mostly lived in houses, flats or bungalows.



Homes in the 1960s were similar to those we have today. Many homes had a television, telephone, beds, washing machines, fridges, baths and toilets.



Food in the 1960s

- People owned fridges so they could store food for longer.
- Shopping was done at several shops rather than a supermarket.
- Food was often bought in tins.
- People began eating more exotic meals such as Chinese, Italian and Indian food.

Timelines of popular toys (1960s—2020)

						
1963	1974	1989	1993	2000	2010	2020
Sindy doll	Rubik's cube	Gameboy and Polly Pocket	TY Beanie Babies	Furby	iPad	PlayStation 5

